

Regional View

Legend

- HUC Boundary
- Sampling Location
- Proposed Navigational Channel 25'
- Proposed Navigational Channel 50'
- Proposed Navigational Channel 100'
- Municipal Boundaries
- SEWFRCA Area
- Project View
- Commercial Boat Ramp
- Public Boat Ramp

OUTREACH EXHIBIT
FOX RIVER RESTORATION
 VILLAGE OF WATERFORD
 RACINE COUNTY, WISCONSIN

EXHIBIT 1

1 in = 500 ft

Regional View

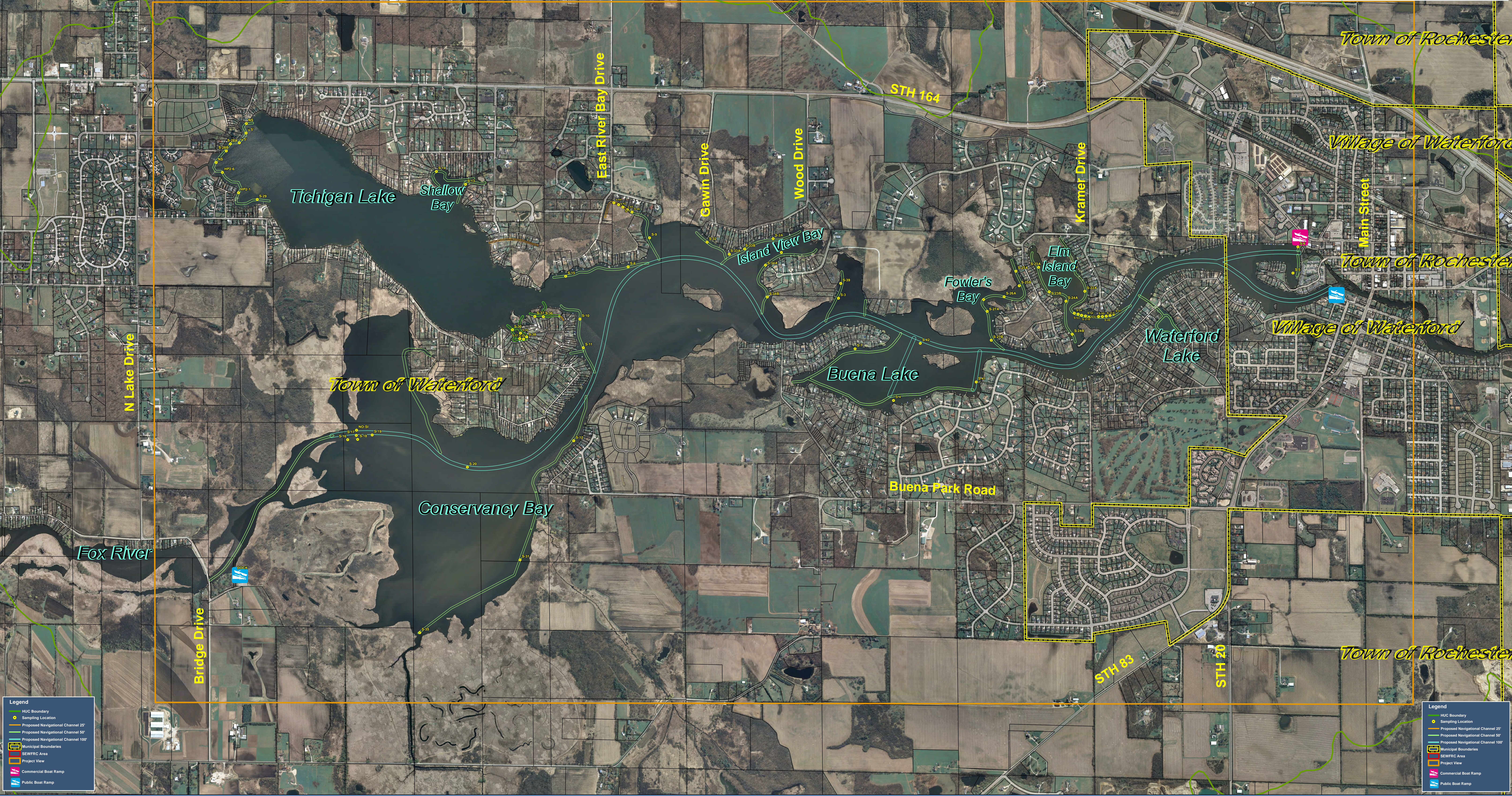
Legend

- HUC Boundary
- Sampling Location
- Proposed Navigational Channel 25'
- Proposed Navigational Channel 50'
- Proposed Navigational Channel 100'
- Municipal Boundaries
- SEWFRCA Area
- Project View
- Commercial Boat Ramp
- Public Boat Ramp

OUTREACH EXHIBIT
FOX RIVER RESTORATION
 VILLAGE OF WATERFORD
 RACINE COUNTY, WISCONSIN

EXHIBIT 1

1 in = 500 ft



Legend

- HUC Boundary
- Sampling Location
- Proposed Navigational Channel 25'
- Proposed Navigational Channel 50'
- Proposed Navigational Channel 100'
- Municipal Boundaries
- SEWFRCA Area
- Project View
- Commercial Boat Ramp
- Public Boat Ramp

Legend

- HUC Boundary
- Sampling Location
- Proposed Navigational Channel 25'
- Proposed Navigational Channel 50'
- Proposed Navigational Channel 100'
- Municipal Boundaries
- SEWFRCA Area
- Project View
- Commercial Boat Ramp
- Public Boat Ramp